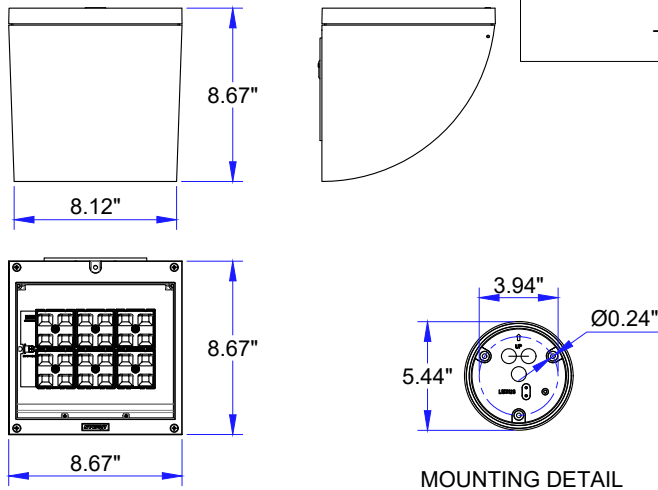
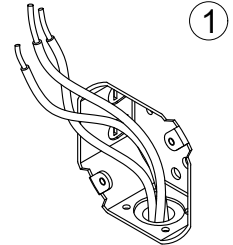


For installation of Quarter 1 wall washer LED. Model. UQU-31344 , UQU-31392

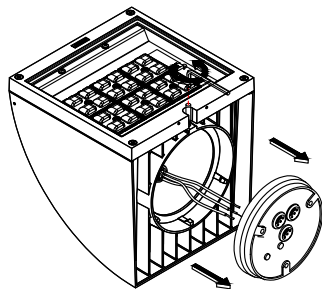
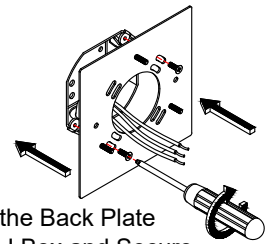
Product drawing (dimensions) SUITABLE FOR WET LOCATIONS



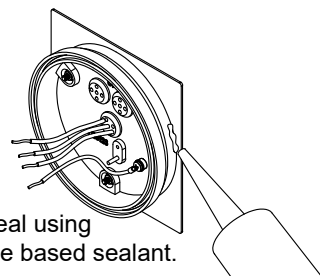
NOTE
Mounts over
a 3" Octagonal
Junction box.



Position the Back Plate
over the J Box and Secure
the back plate to the wall

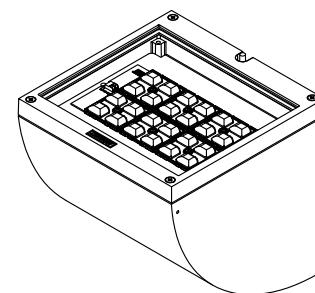
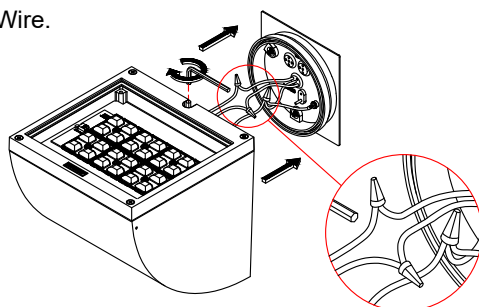


UP



Ensure watertight seal using
UL approved silicone based sealant.

Connect Power and
Ground Wire.



■ LIGMAN standard products are supplied with the control gear 220-240V 50/60Hz.

The control gear for other voltages and frequencies is available upon request, please consult us for more details.

Notice to installer :

1. WIRING INSTRUCTIONS Warning : RISK OF FIRE AND ELECTRICAL SHOCK. : FIXTURE MUST BE INSTALLED BY A QUALIFIED ELECTRICIAN ONLY>FIXTURE IS INTENDED FOR INSTALLATION IN ACCORDANCE WITH THE NATIONAL ELECTRICAL CODE, LOCAL AND FEDERAL CODE SPECIFICATIONS. DISCONNECT POWER BEFORE SERVICING.

2. This fixture has a VOLTAGE SPECIFIC BALLAST, Check that the supply voltage is the same as the installed ballast voltage.

Ligman Lighting USA

7144 NE Progress Court, Hillsboro
Oregon, 97124, USA
Tel : 503 645 0500 | Fax : 503 645 8100

www.ligmanlightingusa.com

UQU-31344 27/06/2022 REV.0 RON
1/1

FM-TS-13-2/28-01-2565/Rev.4